

## Border Hill Mobile Home Park Wellhead Protection Area Source Water Assessment Update

### SUMMARY

This Source Water Assessment focuses on the wellhead protection area for the Border Hill Mobile Home Park Public Water System. This public water system consists of one well and one storage tank. It has 54 service connections and services a population of approximately 75. The wellhead protection area is 381 acres and located in Charlestown, RI.

This assessment was originally completed in 2003 and updated in 2023 to identify current pollution risks and provide information for local land use planning and protection of the water supplies.

This 2023 update utilizes the 2020 land use mapping provided by Rhode Island Geographic Information System (RIGIS), water quality monitoring data from 2018 – 2022, the Sanitary Survey completed by the Rhode Island Department of Health in 2021, and the online Environmental Resource Map managed by the Rhode Island Department of Environmental Management.

The land uses for the wellhead protection area are summarized in both a map in the report and in a table in the appendix. Results of the pollution risk assessment are summarized in the Wellhead Protection Area Risk Spreadsheet in the report. **Overall, the wellhead protection area was given a score of 5 on a scale of 0 to 100 or greater, indicating that the Border Hill Mobile Home Park Wellhead Protection Area is at low risk.** Note that a low ranking does not mean the source is free from contamination risk. Without sufficient protection, any water supply can become contaminated.

Please note: the results of any current assessment cannot be compared directly to previous assessments given changes in wellhead delineations over the years, changes in methods for assessing RIGIS land uses, and/or new contaminants now included in the current analysis such as PFAS.

For further information, please contact Eric Treaster of the Border Hill Mobile Home Park at 860-536-6240.

*This assessment was prepared by URI Cooperative Extension NEMO Program in collaboration with the RI Department of Health with funding from the Centers for Disease Control and Prevention.*

*This page intentionally left blank.*

## **Border Hill Mobile Home Park Wellhead Protection Area Source Water Assessment Update**

### **REPORT CONTENTS**

This report is organized into the following sections:

- **Summary Graphics:**
  - What is a Source Water Assessment?
  - Border Hill Mobile Home Park Source Water Assessment Risk Rating Results
  - Protect Your Water and Your Health

*These are visual summaries of the assessment process, highlights of the results, and practical steps for consumers. They could be used as potential outreach for water consumers by including in the Consumer Confidence Report and placing in common areas.*

- **Understanding the Assessment**

*This section explains why the assessment was completed, what was evaluated, and how the assessment should be used.*

- **Explanation & Determination of Pollution Risk Factors**

*This section explains details of the analyses performed in the assessment.*

- **Border Hill Mobile Home Park Wellhead Protection Area Risk Spreadsheet**

*This section provides the table summarizing the results of all aspects of the assessment. It is the more complete version of the summary graphic that was presented earlier in the Report.*

- **Land Use In the Wellhead Protection Area Map**

*This map shows various land uses within the wellhead protection area. These land uses are part of the assessment.*

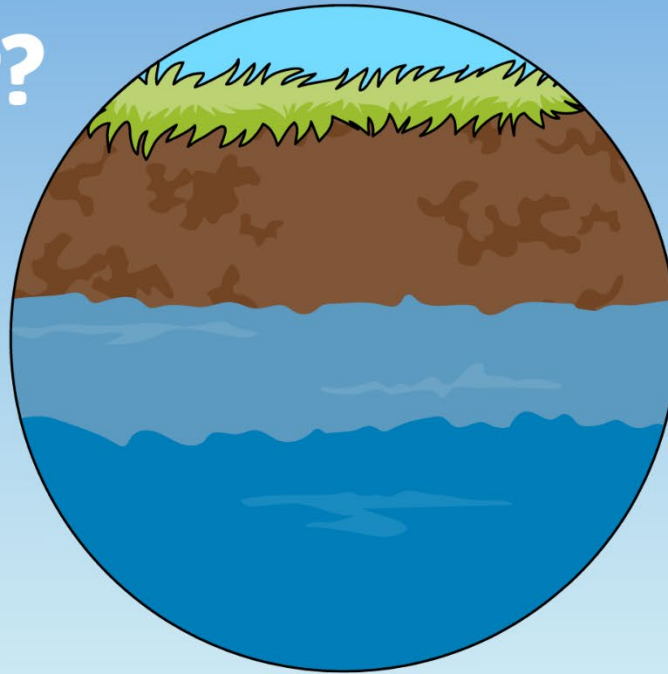
- **Appendix: Documentation**

*This section provides a summary of the data used in the analyses by risk indicator. It also provides additional information about any contaminants detected in the water.*

*This page intentionally left blank.*

# What is a Source Water Assessment?

Source waters (including rivers, lakes, streams, and reservoirs) provide water for drinking. Protecting these waters reduces the risk that people will drink contaminated water and also can help ensure the quantity of water supplies.



Assessments were completed by the University of RI Cooperative Extension in collaboration with RI Department of Health and funded by the Centers for Disease Control and Prevention.

**The Safe Drinking Water Act** required states to develop Source Water Assessment Programs. These focus on wellhead protection areas: the land surrounding a well that supplies a public water system. Rhode Island's assessments focus on three major risks:

## 1. Land Uses

What percentage of the wellhead protection area has high-intensity uses such as commercial, industrial, or cropland?



## 2. Pollution Sources

Are there stormwater outfalls, landfills, underground storage tanks, or other sources of pollution within the wellhead protection area?



## 3. Water Quality Testing

Did regular monitoring data show levels of contaminants that would be concerning for human health?



*This page intentionally left blank.*

# Border Hill Mobile Home Park

## Source Water Assessment

### Risk Rating Results

#### Overall Risk

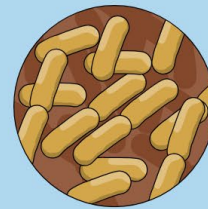
The overall risk ranking is **LOW**. However, a low ranking does not mean the source is free from risk. Without sufficient protection, any water supply can become contaminated.



Land Uses



Pollution Sources



Water Quality Testing

Risk Rating

Low

Medium

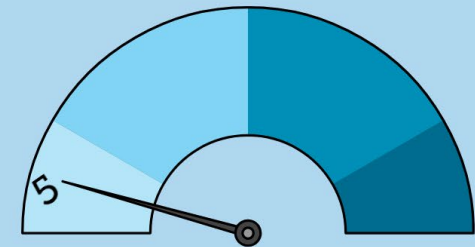
High

Extreme

0

0

5



Identifying specific ways to reduce nitrogen inputs - such as minimizing fertilizer use - could further protect this source water. For a list of ways you can protect your water and your health, please visit: [web.uri.edu/NEMO](http://web.uri.edu/NEMO)

Assessments were completed by the University of RI Cooperative Extension in collaboration with RI Department of Health and funded by the Centers for Disease Control and Prevention.

### Info

The risk rating table used in this assessment is a screening level tool. Its purpose is to provide a methodology for evaluating risks to the waters people use for drinking and to provide consistency in that analysis across water systems. The full assessment can be found online at: [web.uri.edu/NEMO/](http://web.uri.edu/NEMO/)

*This page intentionally left blank.*

# Protect Your Water and Your Health

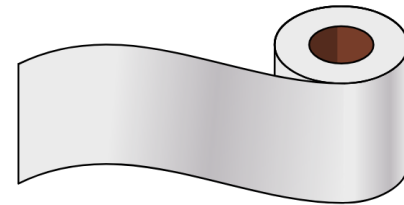
## If Your Water Has:

## You Can:

### Nitrates

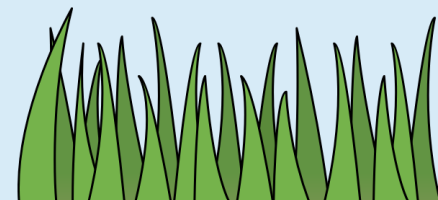
**Poor septic system care can add nitrates to local waters!** Follow these maintenance practices:

- hire a licensed professional for regular maintenance and pumping;
- don't use a garbage disposal;
- only flush toilet paper;
- don't rinse toxic materials down the drains;
- balance water usage throughout the week.



**Following these landscaping practices keeps extra nitrogen out of local waters:**

- limit or avoid the use of fertilizers and pesticides;
- don't store chemicals near wells;
- reduce or avoid summer lawn watering;
- avoid de-icing salt in winter.



These tips are offered as part of Rhode Island's Source Water Assessment Program. For additional tips about protecting your water and your health, please visit: [web.uri/nemo](http://web.uri/nemo)

Assessments were completed by the University of RI Cooperative Extension in collaboration with RI Department of Health and funded by the Centers for Disease Control and Prevention.

*This page intentionally left blank.*

## **UNDERSTANDING THE ASSESSMENT**

### **WHY WAS THE ASSESSMENT DONE?**

The Safe Drinking Water Act (SDWA) Amendments of 1996 required states to develop and implement source water assessment programs (SWAPs) to analyze existing and potential threats to the quality of the public drinking water throughout the state. Using these programs, most states have completed source water assessments for every public water system -- from major metropolitan areas to the smallest towns. Even schools, restaurants, and other public facilities that have wells or surface water supplies have been assessed. A source water assessment is a study and report, unique to a water system, that provides basic information about the water used to provide drinking water. States are working with local communities and public water systems to identify protection measures to address potential threats to sources of drinking water. In Rhode Island, the Department of Health's Center for Drinking Water Quality administers the Source Water Assessment Program.

### **WHAT AREA WAS EVALUATED FOR THIS ASSESSMENT?**

The source water protection area, the area evaluated for this assessment, is the critical area surrounding a public water supply well or an intake on a surface source. For a public water supply well, this is the wellhead protection area (WHPA). The WHPA is the estimated area from which groundwater and surface water will flow from under severe pumping conditions. This can also be stated as the maximum estimated area that water withdrawn from the well will ever be drawn from. For most bedrock wells, this area is a volume dependent circle. For wells in sand and gravel this area is generally not a circle, but an irregular shape determined by sedimentary deposits and pumping rate. The source protection area for surface water sources is generally the watershed of the surface waterbody.

### **WILL THE POTENTIAL CONTAMINATION SOURCES IDENTIFIED IN THE SANITARY SURVEY CONTAMINATE MY SOURCE?**

Potential contamination sources identified in sanitary surveys are facilities that typically use, produce, handle or store contaminants of concern, which, if improperly managed, could find their way to a source of public drinking water. It is important to understand that a release may never occur from a potential contamination source, provided it is using good management practices. Many potential contamination sources are regulated at the federal level, the state level, or both, to reduce the risk of a release. There are several methods that water systems can use to manage potential contamination sources. These often involve educational visits and inspections of stored materials.

### **HOW SHOULD THIS ASSESSMENT BE USED?**

This assessment should be used to plan for improved protection of public drinking water sources. Additional information may also be useful such as identification of the 100-year flood plain, tax map information, soils information or high-density development areas. This assessment is a good starting place for planning protection programs. Communities should act now to protect valuable water supply resources; once contamination occurs clean-up is costly and sometimes technically infeasible. Additionally, unprotected watersheds and wellheads can lead to deterioration of water quality that may eventually lead to higher treatment costs.

## EXPLANATION & DETERMINATION OF POLLUTION RISK FACTORS

### Overview

This Source Water Assessment was completed using the *Guide to Updating Source Water Assessments and Protection Plans, Version 3 - 2010 (Guide)*. All risk indicator ratings were obtained from the *Guide*. A summary of methods as well as calculated risks is presented here.

### Risk Indicator Category 1: High Intensity Land Use

High intensity land use was determined using Rhode Island GIS (RIGIS) land use data (2020 data). Land uses within the WHPA were calculated using ArcMap 10 (ESRI). The percentage of high intensity land use in the WHPA under study is then compared to the rating scale for risk indicator 1, High Intensity Land Use.

Risk Indicator	Rating			
	Low (0)	Medium (5)	High (10)	Extreme (25)
1. High Intensity Land Use	<10%	10-24%	25-50%	>50%

### Risk Indicator Category 2: Pollution Sources Within Inner Protective Radius and Per Acre Throughout the WHPA

Information on the presence or absence of pollution sources within the inner protective radius of the wells and WHPAs under study were determined using the Rhode Island DEM Environmental Resource Map.

Additionally, Sanitary Surveys were obtained through the Rhode Island Department of Health (RIDOH).

The number of pollution sources in the 400' Inner Protective Radius of each well and WHPA Outside of the IPR were compared to the rating scale and ranked for Risk Indicator 2- Pollution Sources Within Inner Protective Radius and Risk Indicator 3 -Per Acre Throughout the WHPA, respectively.

Risk Indicator	Rating			
	Low (0)	Medium (5)	High (10)	Extreme (25)
1. Pollution sources within inner protective radius (400 ft of 200 ft of well)	0	1	2-3	>3
2. Pollution sources per acre throughout WHPA, excluding inner protective radius (multiply by 10)	<0.1	0.1-0.5	0.5-1	>1

**Risk Indicator Category 3: Water Quality Testing for Contaminants, Bacteria, and Nitrate-Nitrogen**

Laboratory results for samples collected from the wells during regular, required monitoring were obtained from Rhode Island Department of Health (RIDOH) and used to determine risk factors 4, 5 and 6. Only the well with the highest risk rating score within each WHPA is used to report these risk factors.

**Risk Factor - History of contaminant detections within the last five years**

This was determined by reviewing all contaminant detections in the laboratory records (excluding bacteria, nitrogen). A risk rating for each contaminant above the detection limit was then assigned based on the Maximum Contaminant Level (MCL). The MCL is based on either Rhode Island or EPA drinking water standards and advisory levels. The highest risk rating observed was used to set the total risk rating for the WHPA.

**Risk Factor - Source water bacteria detections within the last five years**

This was determined by viewing all available bacteria data in the laboratory record for all the wells in the WHPA. The number of bacteria sample detections were used to determine the risk rating.

**Risk Factor - Maximum nitrate-nitrogen (N03-N) concentration in the last five years**

This was determined by viewing all detections of nitrate-nitrogen in the laboratory record for all the wells in the WHPA.

Risk Indicator	Rating			
	Low (0)	Medium (5)	High (10)	Extreme (25)
1. History of contaminant detections within the last 5 years	Trace (Maximum value is less than 10% of MCL)	Less than ½ MCL	Greater than ½ MCL	Greater than MCL (violation)
2. Source water bacteria detections within the last 5 years	Less than 5% of samples have detected total coliform in last 5 years	Greater than 5% of samples have detected total coliform	One or more Fecal coliform sample exhibits a detection	One or more Fecal coliform samples is above water quality standards
3. Maximum nitrate-nitrogen (N03-N) concentration in the last 5 years	<0.5 mg/L N03-N	0.5-2 mg/L N03-N	2-5 mg/L N03-N	>5 mg/L N03-N

## **Border Hill Mobile Home Park Wellhead Protection Area Assessment Results**

The table on the next page summarizes the results of the analyses. Note that the colors of the rows in the table correspond to the colors used for the risk indicator categories explained in the previous section.

*Additional information about the wellhead protection area data shown in that table (such as the specific high-intensity land uses noted, the types of pollution sources throughout the wellhead protection area, and the actual water quality monitoring data) can be found in the Appendix.*

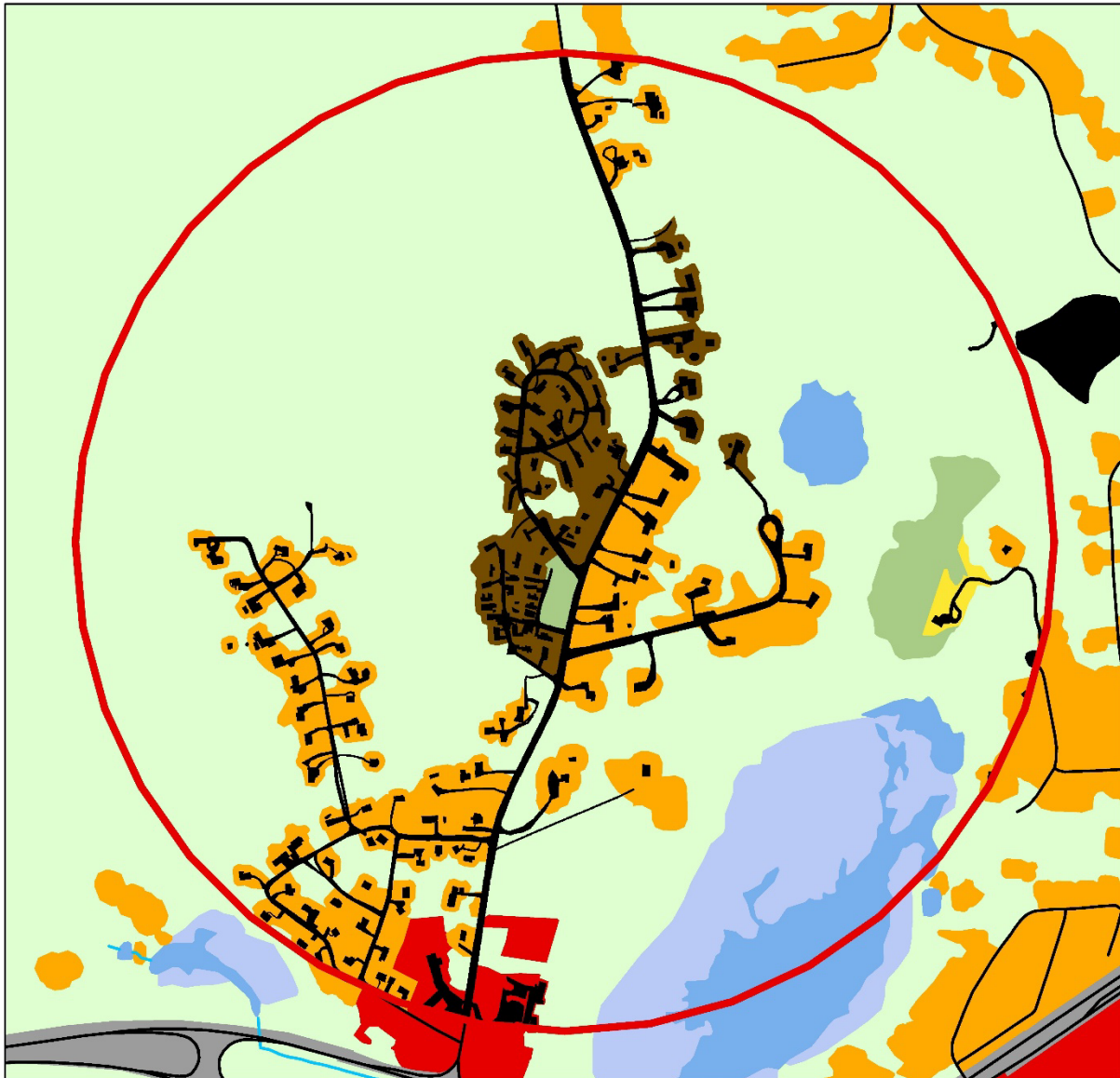
**Wellhead Protection Area Risk Spreadsheet**

The risk rating table used in this assessment is a screening level tool. Its purpose is to provide a methodology for evaluating risks to the waters people use for drinking and to provide consistency in that analysis across water systems.

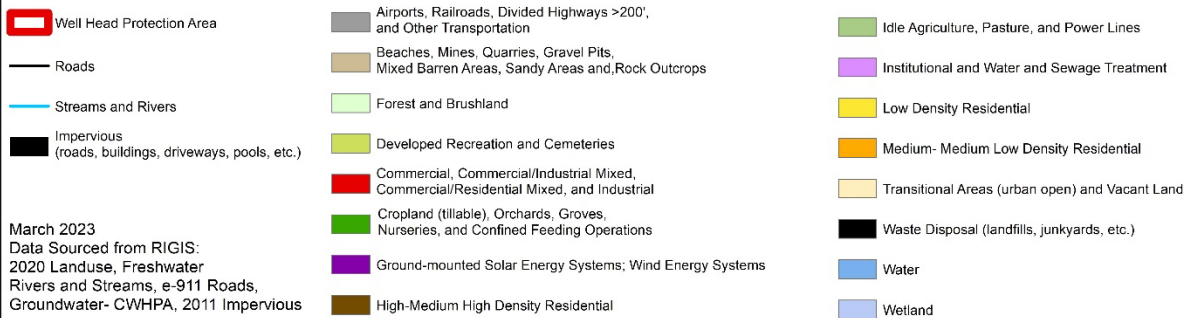
Wellhead Protection Area Risk Indicators	Rating Categories				WHPA Data	
	Low 0	Medium 5	High 10	Extreme 25	Results	Rating
<b>Wellhead Protection Area Land Use</b>						
1. High Intensity Land Use (GIS)	< 10%	10% - 24%	25% - 40%	> 40%	6.44%	0
<b>Existing or Potential Pollution Sources</b>						
2. Pollution sources within inner protective radius (400' or 200') of well	0	1	2-3	> 3	0	0
3. Pollution sources per acre throughout WHPA, excluding inner protective radius. Multiply this number by 10.	< 0.1	0.1 - 0.5	0.5 - 1	> 1	0	0
<b>Water Quality Testing</b>						
4. History of contaminant detects within last 5 years	Trace	< 1/2 MCL	> 1/2 MCL	Violation	Trace	0
5. Source water bacteria detects within last 5 years	None	Total Coliform Detect	Fecal Coliform Detect: Cause Identified and Corrected	Fecal Coliform Violation	No Detects	0
6. Maximum nitrate-nitrogen (NO3-N) concentration in last 5 years	< 0.5 mg/L	0.5 - 2 mg/L	2 - 5 mg/L	> 5 mg/L	0.76 mg/L	5
<b>Overall Ranking: Sum of all risk ratings</b>	0-19	20-59	60-100	>100		<b>5</b>

\*Note that July 2022 Rhode Island adopted H7233 authorizing RIDOH to establish MCLs for PFAS in drinking water and to set interim standards. The interim drinking water standard level of twenty parts per trillion (20 ppt) has been established and is used in this analysis. On or before July 1, 2023, all public water systems in the state (except transient, non-community) shall conduct monitoring for PFAS.

**Land Use in the Wellhead Protection Area**



**Border Hill Wellhead Protection Area**



**Border Hill Mobile Home Park Wellhead Protection Area  
Source Water Assessment Update**

**APPENDIX: DOCUMENTATION**

**Land Use Categories (Wellhead Protection Area Risk Indicator Category 1)**

Descr_2020	Acres	Percent of Total
High Density Residential (<1/8 acre lots)	4.75	1.2%
Medium High Density Residential (1/4 to 1/8 acre lots)	14.34	3.8%
Medium Density Residential (1 to 1/4 acre lots)	37.16	9.7%
Medium Low Density Residential (1 to 2 acre lots)	10.34	2.7%
Low Density Residential (>2 acre lots)	1.30	0.3%
Commercial (sale of products and services)	5.47	1.4%
Pasture (agricultural not suitable for tillage)	1.17	0.3%
Idle Agriculture (abandoned fields and orchards)	6.30	1.7%
Brushland (shrub and brush areas, reforestation)	4.07	1.1%
Deciduous Forest (>80% hardwood)	191.04	50.1%
Softwood Forest (>80% softwood)	15.33	4.0%
Mixed Forest	56.10	14.7%
Water	13.39	3.5%
Wetland	20.48	5.4%
<b>Grand Total</b>	<b>381.24</b>	<b>100.0%</b>
High Intensity	24.57	6.4%

Source: Rhode Island GIS (RIGIS) data (2020)

*High-intensity land uses highlighted*

**Existing or Potential Pollution Sources (Wellhead Protection Area Risk Indicator Category 2)**

As of 3/19/2023

**Border Hill Mobile Home Park WHPA**

Inner Protective Radius=400' Radius  
around each well

<b>Regulated Facilities</b>	<b>Drilled Well #2</b>	
	<b>(400')</b>	<b>Outside IPR</b>
CERCLIS	0	0
Environmental Land Use Restriction	0	0
EPA Superfund	0	0
EPCRA Tier II	0	0
2021 RIDEM Site Investigation and Remediation	0	0
RIPDES Permit	0	0
Stormwater Outfall	0	0
Storage Tank Above Ground (2016)	0	0
Storage Tank Underground (2021)	0	0
Storage Tank Underground LUST (2021)	0	0
Stormwater Multi-Sector General Permit	0	0
Closed Landfill	0	0
Dams	0	0
Stormwater Construction general permit	0	0
Wastewater treatment facility discharge	0	0
<b>TOTAL</b>	<b>0</b>	<b>0</b>
<b>WHPA Acres</b>		<b>381.24</b>
<b>400' Radius Acres</b>		<b>11.54</b>
<b>WHPA Acres-Inner Radius</b>		<b>369.7</b>
<b>Sources/Acre</b>		<b>0</b>
<b>Sources/Acre*10=Rating Score</b>		<b>0</b>

Source: RI Environmental Map, DEM

**Water Quality Monitoring: Detects Only (Wellhead Protection Area Risk Indicator Category 3)**

Testing Year	Analyte	mg/L	
2018	Nitrate-Nitrite	0.76	
2020	Nitrate-Nitrite	0.33	0.32
2021	Nitrate-Nitrite	0.36	0.35

Source: RI Department of Health

Contaminant	Maximum Contaminant Level (MCL)	Potential health effects from long-term exposure above the MCL	Common sources of contaminant in drinking water
Nitrate (measured as nitrogen)	10 mg/L	Infants below the age of six months who drink water containing nitrate in excess of the MCL could become seriously ill and, if untreated, could die. Symptoms include shortness of breath and blue-baby syndrome.	Runoff from fertilizer use; leaching from septic tanks, sewage; erosion of natural deposits

Source: *National Primary Drinking Water Regulations. (2009).* EPA 816-F-09-004