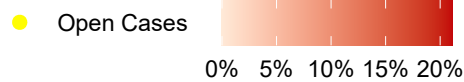
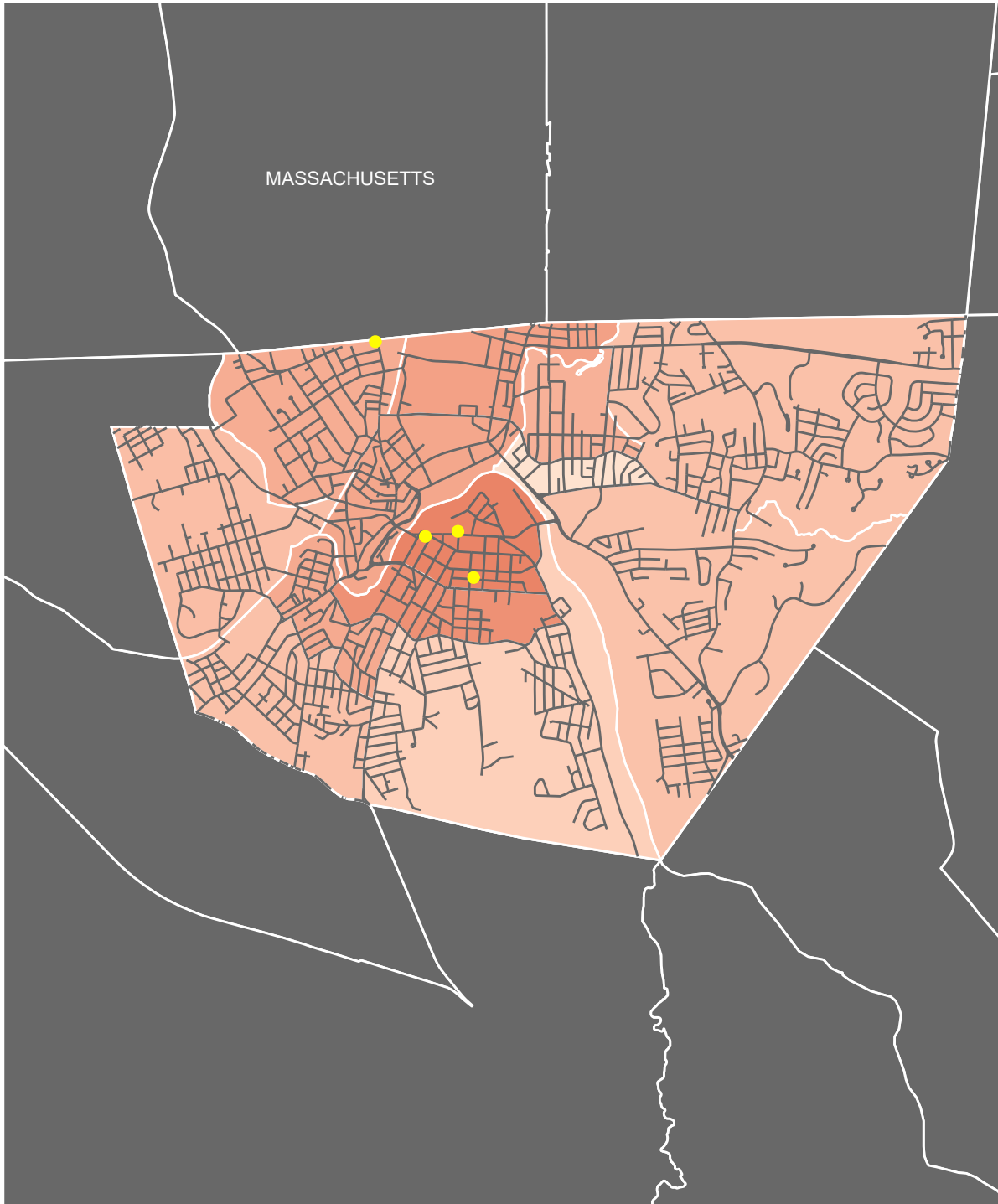


Woonsocket Children Younger Than Six With Elevated Blood Lead Levels, 2018-2020



Note: Data represents the percent of children tested who had blood lead levels of 5 $\mu\text{g}/\text{dL}$ or greater during the years 2018-2020

Data Source: Lead Elimination Surveillance System, RIDOH; Rhode Island Geographic Information System

Map Prepared By: DataSpark, 2021

For More Information Call 401-222-5960 or visit www.health.ri.gov/healthrisks/poisoning/lead

