





Community Health Worker (CHW) CDC CCR Grant 2109 Success Story: Establishing a Lead CHW to Advance Health Equity in RI

July 2023

Rhode Island Department of Health

CHW Grant Program Background



Initiative: RIDOH administers State’s Community Health Workers (CHWs) for COVID Response and Resilient Communities (CDC-RFA-DP21-2109) three-year grant award (“CCR Grant”).

As Persons with Lived Experiences (PLEs), CHWs are often affected by similar health disparities as the communities they represent, serve, and support.



RIDOH CHW Program Grant Background



RIDOH CCR Grant Strategies:

- Engage, Train, and Deploy CHWs Statewide

Overarching Goals:

- Help support pandemic response
- Strengthen community resilience
- Mitigate impacts of COVID-19 and other emergent public health threats and priorities, by improving the overall health of priority populations within communities

As trusted frontline messengers and PLE subject matter experts for communities, CHWs are uniquely positioned and qualified!

Lead CHW Consultant Role



March 2022:

- A Lead CHW consultant role was established
- **Goal:** To facilitate leadership and engagement among CHWs within the Rhode to Equity (R2E) Statewide EOHHS Initiative.
- Swanette Salazar, CCHW, was hired to the position

Partners



RIDOH collaborated through Rhode to Equity (R2E) / EOHHS initiative, which is facilitated by the Care Transformation Collaborative of Rhode Island (CTC-RI)



ADVANCING INTEGRATED HEALTHCARE

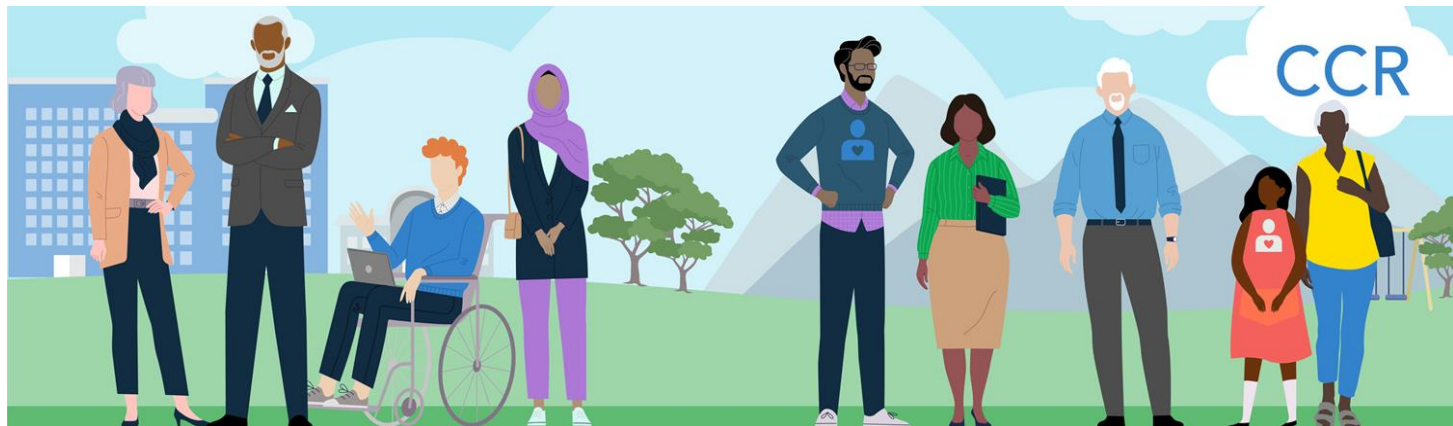


Process and Support



CDC 2109 grant funds supported:

- Developing a job description
- Recruiting and interviewing candidates
- Identifying and contracting a Lead CHW.



Success Story #1: Establishing a Lead CHW to Advance Health Equity in RI



Lead CHW was integral as leader on team:

- Established rapport with CHWs statewide
- PLE knowledge base and skills
- Responds to individual team needs
- Identifies training topics and resources
- Disseminates information (list-serv)



Swanette Salazar, CCHW

Success Story #1: Establishing a Lead CHW to Advance Health Equity in RI



Lead CHW consultant conducts:

- Planning
- Design
- Evaluation
- Information dissemination activities

*This includes ongoing R2E / sustainability conversations



Lead CHW aligns with values of CHW partnerships and self-determination!



Thank you!

RIDOH Center for Public Health Communication
Community Health Worker Program